

FEATURES

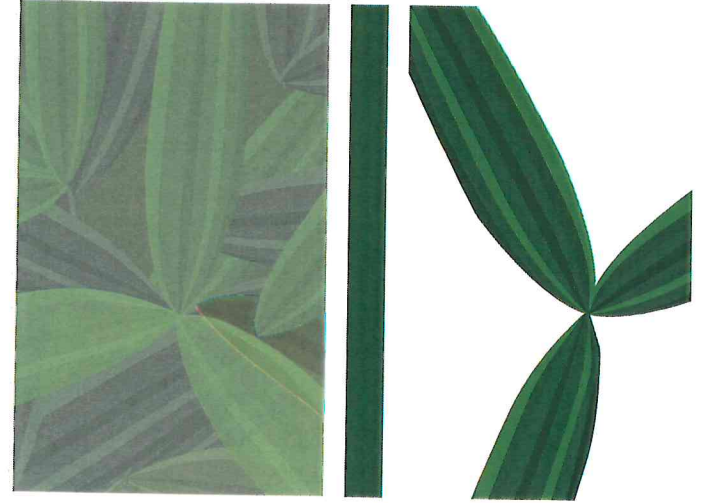
1 Bedroom | 1 Bath Flat
2 Bedroom | 1 1/2 Bath Townhome
Window Coverings
Cable TV Hookups
Outside Storage Areas
Appliances
Close to hospitals

COMMON AREAS

Clubhouse w/ Fitness Room
Community Center
On-site manager
Professionally Landscaped
Walking Path
Community Garden
Private Parking

ACTIVITIES

Social Hour
Monthly birthday celebration
Board games
Genealogy group
Potluck Gatherings
Book Club
Sewing / Quilting Club



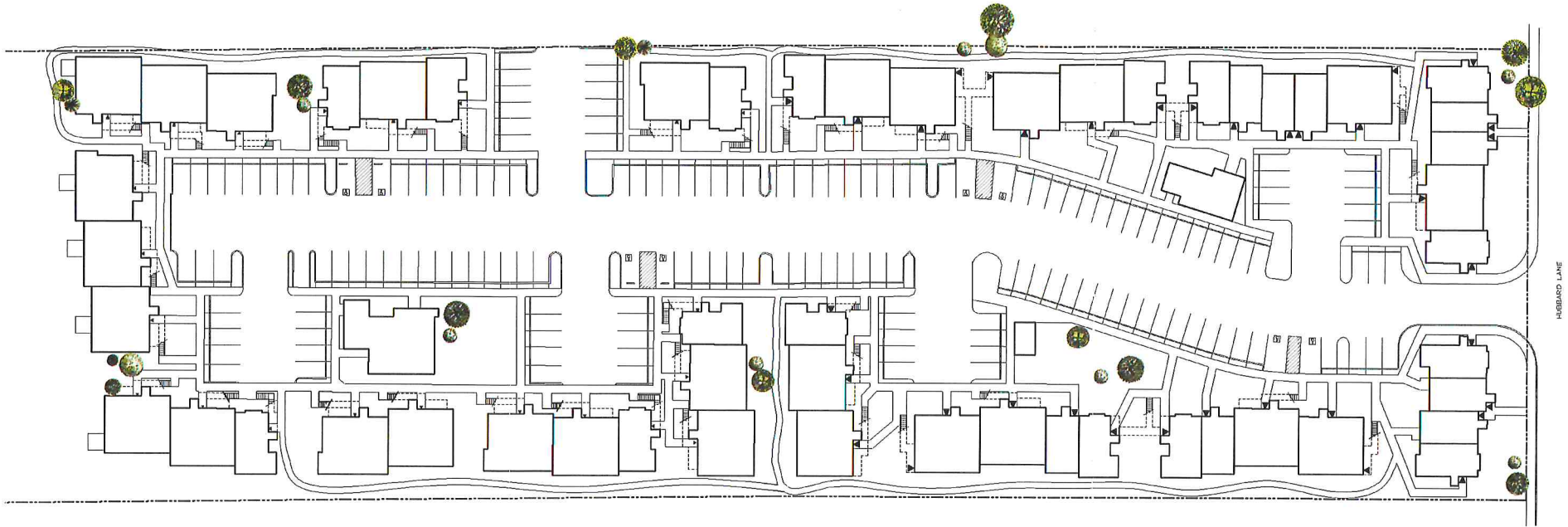
2520 - 2590 Hubbard Lane
Eureka, Ca

KIC | kramer
investment
corporation

1589 myrtle avenue suite b eureka ca 95501
707.444.2919 www.kkramer.com


THE MEADOWS
active adult living

SITE MAP



Lark
One Bed | One Bath
509 Sq. Ft.

Robin
Two Bed | One Bath
896 Sq. Ft.

Sparrow
Two Bed Townhouse
902 Sq. Ft.

